

# AMAX

TM

Professional  
**A-max**

A-max International Ltd.

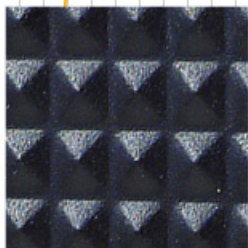
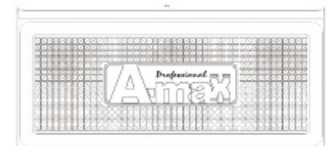
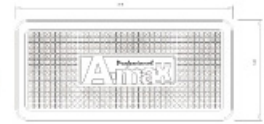
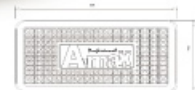
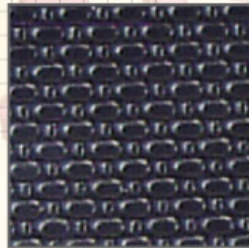
www.amax.com.tw



## ▶ Bit & Socket



# PRODUCTS ACCENT INTRODUCE



# PRODUCTS ACCENT INTRODUCE



## BAK0090

### 62PCS POWER BIT SEET

12 - PHILLIPS: #1x3, #2x6, #3x3

12 - POZI: #1x3, #2x6, #3x3

6 - SLOTTED: 4mmX3, 6mmX3

9 - HEX: 4mmX3, 5mmX3, 6mmX3

21 - TX: T10x3, T15x3, T20x3, T25x3, T27x3, T30x3, T40x3

1 - 60mm (L) STAINLESS MAGNETIC BIT HOLDER

1 - 60mm (L) QUICK MAGNETIC BIT HOLDER"



## BAK0090

### 62PCS POWER BIT SEET

12 - PHILLIPS: #1x3, #2x6, #3x3

12 - POZI: #1x3, #2x6, #3x3

6 - SLOTTED: 4mmX3, 6mmX3

9 - HEX: 4mmX3, 5mmX3, 6mmX3

21 - TX: T10x3, T15x3, T20x3, T25x3, T27x3, T30x3, T40x3

1 - 60mm (L) STAINLESS MAGNETIC BIT HOLDER

1 - 60mm (L) QUICK MAGNETIC BIT HOLDER"



### SAHK2401

#### 50PCS 1/4" & 1/2" DR. SOCKET SET

1/4" DR.

11-SOCKETS: 4,5,6,7,8,9,10,11,12,13,14mm

1-UNIVERSAL JOINT

1-LEVER TYPE RATCHET HANDLE W/ 72T GEAR

1-SLIDING T BAR

1-EXTENSION BAR 75mm(L)

1-T BAR DRIVER

13-BITS: (+)1,2,3; (-)4,5,6,5; (T)10,20,25; (H)3,4,5,6+ ADAPTER

1/2" DR.

16-SOCKETS: 8,9,10,11,12,13,14,15,16,17,18,19,21,22,23,24mm

1-UNIVERSAL JOINT

1-LEVER TYPE RATCHET HANDLE W/ 72T GEAR

2-EXTENSION BARS 125mm & 250mm

1-SLIDING T BAR

MATERIAL: ALL CR-V, MAT FINISHED, W/ KNURLED, BIT S2\*



### SAHK4002

#### 46PCS 1/2" DR. SOCKET SET

18-SOCKETS:

8,9,10,11,12,13,14,15,16,17,18,19,21,22,24,27,30,32mm

1-SLIDING T BAR

1-UNIVERSAL JOINT

1-CURVED TYPE RATCHET HANDLE W/ 72T GEAR

2-EXTENSION BARS 125mm & 250mm

2-SPARK PLUG SOCKETS 16mm & 21mm

13-COMBINATION WRENCHES:

6,7,8,9,10,11,12,13,14,15,16,17,19mm

8-HEX KEY WRENCHES: 2,2.5,3,4,5,6,8,10mm

MATERIAL: ALL CR-V, MAT FINISHED, W/ KNURLED\*



### SAHK2001

#### 44PCS 1/4" DR. BIT SOCKET & SOCKET SET

13-SOCKETS: 4,4.5,5,5.5,6,7,8,9,10,11,12,13,14mm

1-UNIVERSAL JOINT

2-EXTENSION BARS 50mm & 100mm

1-SLIDING T BAR 1-SPANNER HANDLE

1-FLEXIBLE EXTENSION BAR

3-HEX KEY WRENCHES: 1.5,2,2.5mm

21-BIT SOCKETS: (+)1,2,3; (T)10,15,20,25,30,40; (\*)1,2,3;

(H)3,4,5,6,7,8mm; (-)4,5,5.5,6,5mm

1-CURVED TYPE RATCHET HANDLE W/ 72T

GEAR MATERIAL: ALL CR-V, MAT FINISHED, W/ KNURLED, BIT S2\*



### SAHK4001

#### 21PCS 1/2" DR. SOCKET SET

16-SOCKETS:

9,10,11,12,13,14,15,16,17,18,19,22,24,27,30,32mm

2-EXTENSION BARS 75mm & 125mm

1-UNIVERSAL JOINT

1-SLIDING T HEAD 1/2"(M) X 3/8"(F)

1-LEVER TYPE RATCHET HANDLE W/ 72T GEAR

MATERIAL: ALL CR-V, MAT FINISHED, W/ KNURLED\*



### SAHK2402

#### 55PCS 1/4" & 1/2" DR. SOCKET SET

1/4" DR.

12-SOCKETS: 4,5,5.5,6,6.5,7,8,9,10,11,12,13mm

2-EXTENSION BARS 50mm & 150mm

1-SLIDING T HEAD 1/4"(M) X 3/8"(F)

1-SPINNER HANDLE

1-UNIVERSAL JOINT

12-BITS SOCKETS: (T)20,25,27,30; (H)3,4,5,6;(-)4,5,5; (+)1,2

1-CURVED TYPE RATCHET HANDLE W/ 72T GEAR

1/2" DR.

13-SOCKETS: 10,11,12,13,14,15,17,19,22,24,27,30,32mm

2-SPARK PLUG SOCKETS 16mm & 21mm

1-UNIVERSAL JOINT

2-EXTENSION BARS 75mm & 250mm

1-CURVED TYPE RATCHET HANDLE W/ 72T GEAR

1-SLIDING T HEAD 1/2"(M) X 3/8"(F)

5-HEX KEY WRENCHES: 1,25,1.5,2,2.5,3

MATERIAL: ALL CR-V, MAT FINISHED, W/ KNURL, BIT S2"



### SAHK2002

#### 46PCS 1/4" DR. SOCKET SET

13-SOCKETS: 4,4.5,5,5.5,6,7,8,9,10,11,12,13,14mm

5-DEEP SOCKETS: 6,8,10,12,13mm

2-EXTENSION BARS 75mm & 150mm

1-SLIDING T HEAD 3/8"(F) X 1/4"(M)

1-SPINNER HANDLE

1-UNIVERSAL JOINT

1-COUPLER

21-BITS: (+)1,2,3; (-)4,5,6,5,8; (\*)1,2,3;

(H)3,4,5,6,8; (T)10,15,20,25,27,30,40

1-CURVED LEVER TYPE RATCHET HANDLE W/ 72T GEAR

MATERIAL: CR-V, SATIN FINISHED, W/ KNURLED, BIT S2



### SAHK4003

#### 29PCS 1/2" DR. SOCKET SET

18-SOCKETS: 10,11,12,13,14,15,16,17,18,19,20,21,22,23,24,27,30,32mm

4-DEEP SOCKETS: 10,13,17,19mm

2-EXTENSION BARS 125mm & 250mm

2-SPARK PLUG SOCKETS 16mm & 21mm

1-CURVED TYPE RATCHET HANDLE 72T GEAR

1-SLIDING T BAR

1-UNIVERSAL JOINT

MATERIAL: ALL CR-V, MAT FINISHED, W/ KNURLED"



### SAHK3001

#### 25PCS 3/8" DR. SOCKET SET

17-SOCKETS:

6,7,8,9,10,11,12,13,14,15,16,17,18,19,21,22,24mm

3-DEEP SOCKETS: 10,13,17mm

2-EXTENSION BARS 75mm & 150mm

1-SLIDING T HEAD 1/2"(F) X 3/8"(M)

1-UNIVERSAL JOINT

1-CURVED LEVER TYPE RATCHET HANDLE W/ 72T GEAR

MATERIAL: CR-V, MAT FINISHED, W/ KNURLED, BIT S2"



### BAK0003

#### 25PCS 1/4" DR. SOCKET & BIT SET

6 - 1/4" DR. SOCKET: 6, 7, 8, 10, 11, 13

16 - 25mm (L) BIT:

PH: 1, 2; PZ: 1, 2; HEX: 3, 4, 5, 6; SLOTTED: 4, 6;

TORX: T10, 15, 20, 25, 30, 40

1 - 60mm (L) STAINLESS MAGNETIC BIT HOLDER

1 - 90mm (L) RATCHET WRENCH

1 - 18mm (L) 1/4"x5/16" ADAPTER"



### BAK0085

#### 21PCS WRENCH & MICRO BITS SET

4 - PHILLIPS: 1, 2, 3, 4

8 - HEX: 2.5, 3, 4, 5, 6, 7, 8, 10

6 - TORX: T10, 15, 20, 25, 27, 30

2 - SLOTTED: 4, 6.5

1 - RATCHET WRENCH 8x10mm (72T)"



### BAK0002

#### 32PCS COLOR RING BIT SET

COLOR RING BITS: 4 - PHILLIPS:

1, 2, 2, 34 - POZI: 1, 2, 2, 3

4 - SLOTTED: 3, 4, 5, 6

4 - HEX: 3, 4, 5, 6

7 - TORX: 10, 15, 20, 25, 27, 30, 40

7 - TORX TAMPER: 10, 15, 20, 25, 27, 30, 40

1 - ADAPTER 1 - 65mm (L) MAGNETIC BIT HOLDER"



### BAK0013

#### 26PCS 1/4" DR. SOCKET & BIT SET

5 - 1/4" DR. SOCKET: 6, 7, 8, 10, 13

18 - COLOR BITS:

PHILLIPS: 1, 2, 3; POZI: 1, 2, 3; HEX: 3, 4, 5, 6;

SLOTTED: 4, 4.5, 6.5; TORX: T10, 15, 20, 25, 30

1 - 90mm (L) RATCHET WRENCH

1 - 50mm (L) EXTENSION BAR

1 - 1/4" DR. COUPLER"



### BAK0086

#### 24PCS BIT & MAGNETIC NUT SET

3 - PH1, 2, 3

1 - PH2 FOR DRYWALL SCREW

3 - PZ1, 2, 3

6 - T10, 15, 20, 25, 30, 40

3 - HEX 4, 5, 6

5 - MAGNETIC NUTSETTER: 1/4", 8, 10, 11, 13"



### AC0012

#### 25PCS DRILL & NUT SET

5 - HSS DRILLS: 3.2, 4.8, 6.4, 8, 8.7

10 - GUIDE BUSHINGS: B1, B2, B3, B4, B5, B6, B7, B8, B9, B10

5 - EXTRALTOR PINS: C1, C2, C3, C4, C5

5 - EXTRALTOR NUTS: D1, D2, D3, D4, D5"



### BAK0088

#### 31PCS PRECISION BIT SET

4 - PHILLIPS: 000, 00, 0, 1

2 - POZI: 0, 1

8 - HEX: 0.7, 0.9, 1.3, 1.5, 2, 2.5, 3, 4

7 - SLOTTED: 1, 1.5, 2, 2.5, 3, 3.5, 4

9 - TORX: T4, 5, 6, 7, 8, 9, 10, 15, 20

1 - BIT DRIVER"



### BAK0092

#### 35PCS 1/4" DR. SOCKET & BIT SET

1 - REVERSIBLE BITS DRIVER HANDLE W/ EXTENSION BAR

1 - 1/4" x 60mm (L) MAGNETIC QUICK RELEASE BIT HOLDER

9 - 1/4" DR. SUPER LOCK SOCKET 5, 6, 7, 8, 9, 10, 11, 12, 13mm

23 - 25mm (L) BITS:

3 - PHILLIPS: 1, 2, 3

3 - POZI: 1, 2, 3

2 - SLOTTED: 3, 5

6 - HEX: 2, 2.5, 3, 4, 5, 6

6 - TORX: T10, 15, 20, 25, 30, 40

3 - ROBERTSON: 1, 2, 3

1 - BIT ADAPTER"



### BAK0087

#### 29PCS BIT & SOCKET SET

3 - PHILLIPS: 1, 2, 3

3 - POZI: 1, 2, 3

3 - SLOTTER: 4, 5, 6

7 - TORX: 10, 15, 20, 25, 27, 30, 40

10 - 1/4" DR. MULTI SOCKET: 4, 5, 6, 7, 8, 9, 10, 11, 12, 13mm

1 - RATCHET WRENCH 8x10mm (72T)

1 - BIT HOLDER

1 - 1/4" DR. SOCKET ADAPTER"



### SHK4203

**9PCS IMPACT HEX BIT SOCKET SET**  
 9 - 1/2" DR. 75mm (L) HEX - 4, 5, 6, 8, 10, 12, 14, 17, 19  
 12SETS/CTN; 17/18KGS/0.6'



### SHK4201

**9PCS IMPACT SPLINE BIT SOCKET SET**  
 9 - 1/2" DR. 75mm (L) - 4, 5, 6, 8, 9, 10, 12, 14, 16  
 12SETS/CTN; 16/17KGS/0.6'



### SHK4202

**9PCS IMPACT RIBE BIT SOCKET SET**  
 9 - 1/2" DR. 75mm (L) RIBE - 5, 6, 7, 8, 9, 10, 12, 13, 14  
 12SETS/CTN; 15/16KGS/0.6'



### BAK0089

**113PCS POWER BIT SET**  
 13 - 90mm (L) BITS:  
 3 - PHILLIPS: #2x3  
 3 - POZI: #2x3  
 7 - TORX: T10, T15, T20x3, T25, T30  
 98 - 25mm (L) BITS:  
 21 - PHILLIPS: #1x7, #2x7, #3x7  
 21 - POZI: #1x7, #2x7, #3x7  
 14 - SLOTTED: 4mmX7, 6mmX7  
 21 - HEX: 4mmX7, 5mmX7, 6mmX7  
 14 - TX: T10x2, T15x2, T20x2, T25x2, T27x2, T30x2, T40x2  
 7 - TAMPER TX: T10, 15, 20, 25, 27, 30, 40  
 1 - 60mm (L) STAINLESS MAGNETIC BIT HOLDER  
 1 - 65mm (L) QUICK CHUCK BIT HOLDER"



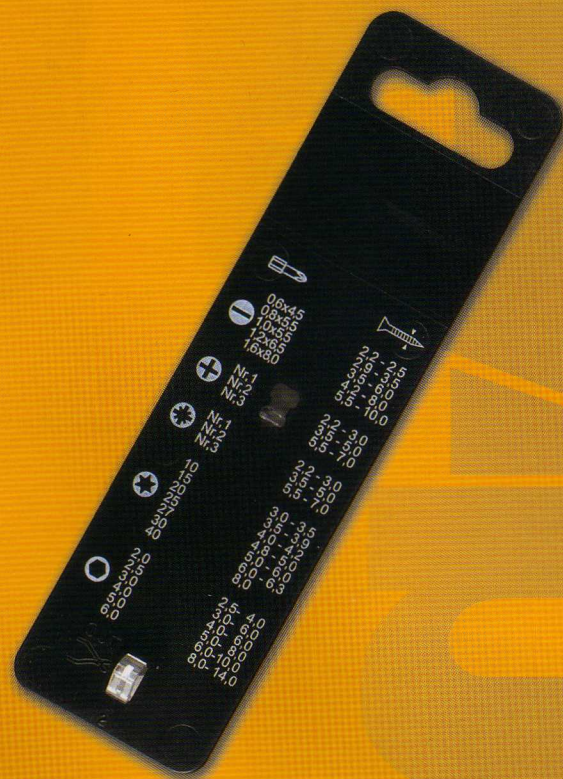
### BAK0016

**37PCS 1/4" DR. SOCKET & BIT SET**  
 11 - SUPER LOCK SOCKET: 4, 4.5, 5, 5.5, 6, 7, 8, 9, 10, 11, 12  
 22 - BITS:  
 4 - PH1, PH2, PH2, PH3  
 4 - PZ1, PZ2, PZ2, PZ3  
 3 - HEX: 4, 5, 6mm  
 4 - SLOTTED: 3, 4, 5, 6mm  
 7 - TORX: T10, 15, 20, 25, 27, 30, 40  
 1 - 1/4"x1/4" DR. BIT HOLDER  
 1 - 60mm (L) MAGNETIC BITS HOLDER  
 1 - 50mm (L) EXTENSION BAR  
 1 - 115mm (L) 1/4" DR.x1/4" DOUBLE WAY RATCHET WRENCH"

### SHK32401

**9PCS BOLT TWIST BIT SOCKET SET**  
 9 - 5/8" DR. 60mm (L) - 2, 3, 4, 6, 8  
 4 - 1/2" DR. 75mm (L) - 8, 10, 12, 14"  
 12SETS/CTN; 13.5/14.5KGS/0.6'





## 8 plastic hangers assemblies / PC+ABS

- 2PCS 25mm(L) Bit Set
- 3PCS 25mm(L) Bit Set
- 10PCS 25mm(L) Bit Set
- 15PCS 25mm(L) Bit Set
- 1PCS 50mm(L) Bit Set
- 5PCS 50mm(L) Bit Set
- 1PCS 75mm(L) Bit Set
- 5PCS 75mm(L) Bit Set

## The following sizes can be fitted in these plastic hangers

PHILLIPS: #1,#2,#3  
 POZI: #1,#2,#3  
 SLOTTLD: 3 - 6 mm  
 HEX: 3 - 6 mm  
 TX-STAR: T10 - T40  
 TX-STAR TAMPER: TH10 - TH40



## A-MAX International Ltd.

**A** No.9, Alley 5, Lane 2, Secretary. 3,  
 Fusing Rd., Taichung 40252, Taiwan

**T** 886-4-22613552

**F** 886-4-22616373

**E** [amax.tool@msa.hinet.net](mailto:amax.tool@msa.hinet.net)

**W** [www.amaxtool.com](http://www.amaxtool.com)  
[www.amaxtool.com.tw](http://www.amaxtool.com.tw)